

Single-Unit Cement-Retained Restorations



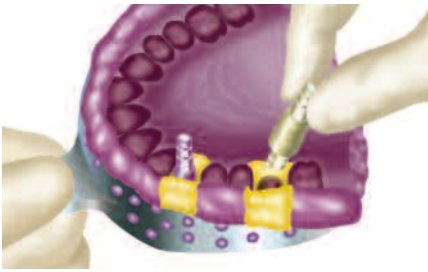
1. Remove Healing Collars from implants using the 1.25mmD (0.050") Hex Tool.



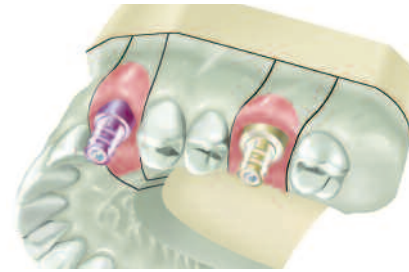
2. For the indirect impression technique, screw Indirect Transfers onto implants with the 1.25mmD Hex Tool. Block out the access openings of the screws with soft wax before making the impression.



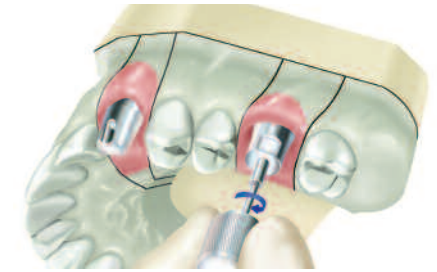
3. Use light-to medium-body material around transfer and record a full-arch impression with standard body material. Remove transfers from implants after impression has been taken. Replace Healing Collars.



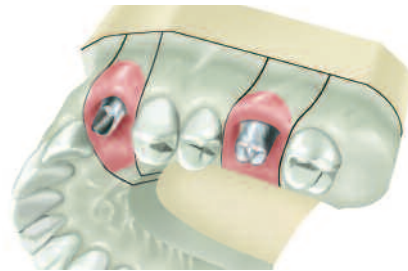
4. Attach Implant Analog to transfer with the 1.25mmD Hex Tool and re-insert into impression. Send impression to laboratory.



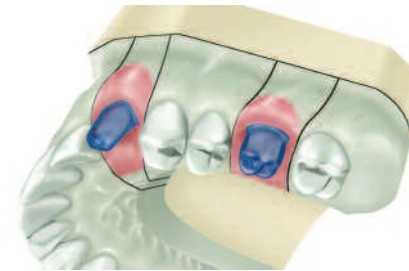
5. Pour model in die stone using soft tissue material to represent gingival contours if desired. Remove transfers from stone model.



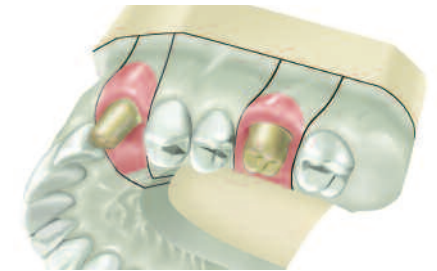
6. Select appropriate abutments. Seat the 20° Angled Abutment and the Hex-Lock™ Abutment to the appropriate Implant Analogs using the 1.25mmD Hex Tool.



7. Modify the 20° Angled Abutment and Hex-Lock Abutment as needed.



8. Wax and cast the copings using traditional prosthodontic techniques.



9. Apply opaque and porcelain to casting to complete restoration.



10. Seat the 20° Angled Abutment and Hex-Lock Abutment onto implants with the 1.25mmD Hex Tool. Apply 30 Ncm of torque with a calibrated prosthetic torque wrench. Verify with x-rays that abutments are fully seated.



11. Cement final prosthesis. If desired, provisional cement can be used.



12. Completed restorations are in place.

Note: This guide is for educational use only.

Refer to the Zimmer Dental Prosthetics Instructions for Use (part #4894), and Tapered Screw-Vent® and AdVent® Implant Restorative Manual (part #4941) for complete instructions for use.

