



BioMend® & BioMend® Extend™ Absorbable Collagen Membranes



BioMend Extend Membrane – absorbed in 18 weeks

BioMend Membrane – absorbed in 8 weeks

The proven, absorbable membrane.

The collagen advantage

Derived from bovine tendon, the Type 1 collagen used for *BioMend* Membranes is among the most important stress-carrying components for wound stabilization!

Clinical use has demonstrated no immune or sensitivity reactions!¹ Other types of membranes containing PGA and PLA degrade directly to acids and have been associated with an inflammatory response.²

Long-lasting advantages

- Rigid enough to maintain space.
- Eliminates second-surgery membrane removal.

Excellent handling

- Tear-resistant, pliable and easy to handle even when hydrated.

Clinical advantages

Space Maintenance Rigid enough to create and maintain space.

Predictability of Results Functions as a barrier during the critical period of wound healing; *BioMend* Collagen Membrane is absorbed in approximately 8 weeks, *BioMend Extend* Membrane is absorbed in approximately 18 weeks.

Absorbable Eliminates second-stage surgery for membrane removal, reducing wound trauma and surgical chair time.

Cell-Occlusive Prevents epithelial cell migration and maintains space for periodontal ligament and bone regeneration.

3-D Matrix Allows integration of connective tissue flaps and passage of essential nutrients, reducing the likelihood of membrane exposure and gingival recession.

Wound Stabilization Helps stabilize and maintain blood clot in the defect space.



BioMend and BioMend Extend Membranes are completely absorbable, biocompatible, and provide excellent handling characteristics.



zimmer | dental
Confidence in your hands™

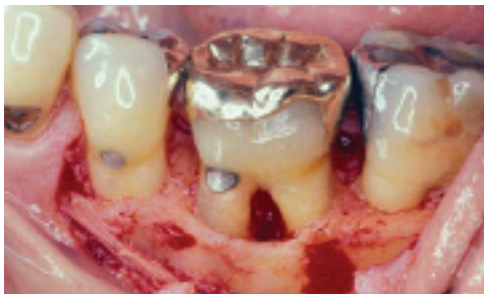
BioMend and BioMend Extend Absorbable Collagen Membranes

Handling advantages

Superior Handling Pliable, but not slippery when hydrated; conforms easily to defect morphology.

Predictable Placement Non-friable and suturable; can be easily modified and positioned.

Reduced Contamination Risk Sterile templates allow pre-shaping; membrane need only be placed in the defect site once, reducing contamination risk.



The exposed defect site prior to surgery.



Puros® Particulate Allograft in place.



BioMend Membrane placed over allograft.



Normal probing depth restored.

Catalog Number	Description
0103	BioMend Membrane, 15x20
0105	BioMend Membrane, 20x30
0107	BioMend Membrane, 30x40
0140	BioMend Extend Membrane, 15x20
0141	BioMend Extend Membrane, 20x30
0142	BioMend Extend Membrane, 30x40

Clinical photographs courtesy of Dr. Hom-Lay Wang, DDS, MSD, Department of Periodontics, University of Michigan. Individual results may vary.

1. Data on file.
2. Daniels AU, Taylor MS, Heller J. Toxicity of absorbable polymers proposed for fracture fixation devices. Presented at the 38th Annual Meeting of the Orthopaedic Research Society, San Francisco, 1992.

To learn more about this product, please visit us online at www.zimmerdental.com or to speak to a sales representative, call 800 854 7019.

To receive our eNews visit us at http://www.zimmerdental.com/news_eNewsletterSignUp.aspx

For more information about our Products, Professional Programs and Educational Opportunities, contact us:

In the U.S. 800 854 7019
 To fax an order 888 225 2483
 Outside the U.S. +1 760 929 4300
 Australia +61 (0)2 9950 5444 or 1 800 241 916
 Canada +1 905 567 2073 or 1 800 265 0968

France +33 (0)1 45 12 35 35
 Germany +49 (0)761 4584 722/723
 Israel +972 (0)3 6124242
 Spain +34 93 846 05 43



Zimmer Dental
 1900 Aston Avenue
 Carlsbad, CA 92008-7308
 USA

www.zimmerdental.com