



TWO IMPLANTS. TWO SOLUTIONS.
ONE SYSTEM. ONE SOURCE.

AdVENT SINGLE-HANDEDLY SETS THE STAGE.

AdVent[™]
SINGLE-STAGE IMPLANT



zimmer | dental
Confidence in your hands[™]

Formerly Centerpulse

ADVENT SINGLE-STAGE IMPLANT SYSTEM

AdVent's tapered design and internal hex connection with friction-fit abutments raise the standard in single-stage implant dentistry. AdVent has a 3mm machined neck and is value-packaged with both a low-profile healing screw and 2mm implant extender to accommodate varying tissue heights.



Internal Hex Connection with Friction-Fit Abutments. Forms a virtual "cold-weld" with the implant, virtually eliminating micromovement, the leading cause of screw-loosening.

Tapered Design. Soft-bone surgical protocol enhances initial stability through osseocompression when the implant is inserted into a straight surgical site.

Triple-Lead Threads. Allows for three-times faster insertion than an implant with a standard thread pitch.

Self-Tapping. Means less surgical time.

AdVent's single-stage protocol saves time and lessens patient trauma. The complete assortment of prosthetics support all restorative needs. And when a two-stage protocol is needed, simply use the same surgical kit to place Tapered



Screw-Vent two-stage implants. **In short, AdVent's simplicity and versatility benefit surgeons, restoring doctors and patients alike.**



Packaged for Value, Versatility and Optimal Esthetics

AdVent is packaged with both a low-profile cover screw and a 2mm implant extender to accommodate varying tissue heights. AdVent implants can be placed with subgingival margins by preparing the surgical site an additional 1mm to 2mm and attaching the implant extender and cover screw.

Surgical placement for one-stage surgery with AdVent implants.



1. Drill to the score line matching the length of the implant.



2. Initiate self-tapping with the attached plastic carrier.



3. Complete the implant insertion manually with the HX3.0 Hex Tool or with the HX3.0D and the hand piece.



4. Attach the cover screw to the implant or to the Extender.

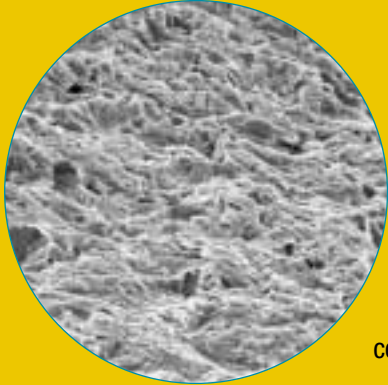


5. For thick tissue: Suture with implant Extender in place for the healing period.



6. For thin tissue: Suture without Extender in place for the healing period.

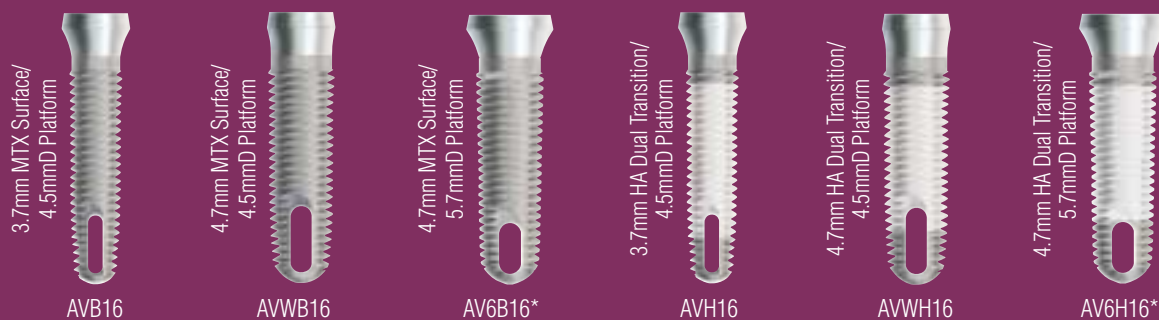
ADVENT SINGLE-STAGE IMPLANT SYSTEM



Surface Options:

MTX Microtextured Surface enhances bone apposition, compared to a machined titanium surface.¹ Zimmer Dental's proprietary grit-blast process produces a uniform 1-2 micron surface roughness without rounding precision corners and provides 44% more surface area than machined titanium (Rq 0.8 microns).¹

HA Dual Transition Selective Surface. Patented surface combination features a MP-1™ coated midsection, the highest crystalline HA available. With 2mm zone of textured titanium for soft tissue maintenance, and 3mm of textured titanium at the apex for self-tapping efficiency.



Implant Options:

AdVent implants are available in four lengths and three diameter/platform combinations. The 3.7mm implant has a 4.5mmD platform. The 4.7mm now comes with two platform sizes: 4.5mmD or 5.7mmD. The 4.5mmD platform uses dedicated AdVent prosthetics. The wider 5.7mmD platform uses Tapered Screw-Vent prosthetics.

AdVent Prosthetics Fit Every Restorative Need

The AdVent system offers a complete assortment of prosthetics to support all restorative needs. AdVent's friction-fit abutments form a virtual "cold-weld" when assembled with the implant's internal hex, virtually eliminating micromovement, the leading cause of screw-loosening. AdVent implants are now offered with two internal hexagon platform options: 4.5mmD and 5.7mmD.*

Hex-Lock® Straight and 20° Angled Abutments for cement-retained applications, offering the restoring clinician the familiarity of traditional crown and bridge processes.

Hex-Engaging "Cast-To" Gold Abutments for either screw-retained single-tooth or cemented custom restorations.

Non Hex-Engaging "Cast-To" Gold Abutments for multiple-unit screw-retained restorations.

Tapered Abutments for multiple-unit screw-retained restorations.

Overdenture Attachments for bar-and tissue-supported appliances.

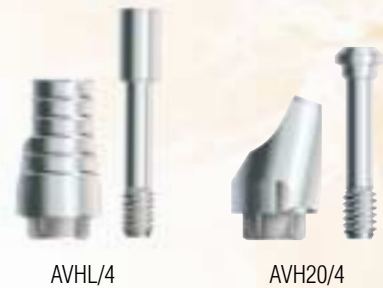
AdVent's newest implant flares from a 4.7mm body to a 5.7mmD prosthetic platform and utilizes Tapered Screw-Vent prosthetics. AdVent implants with a 4.5mmD platform use dedicated AdVent prosthetics.

* Advent 5.7mmD platform utilizes Tapered Screw-Vent 5.7mmD platform components.

PLATFORMS



CEMENT-RETAINED RESTORATIONS



SCREW-RETAINED RESTORATIONS



OVERDENTURE ATTACHMENTS



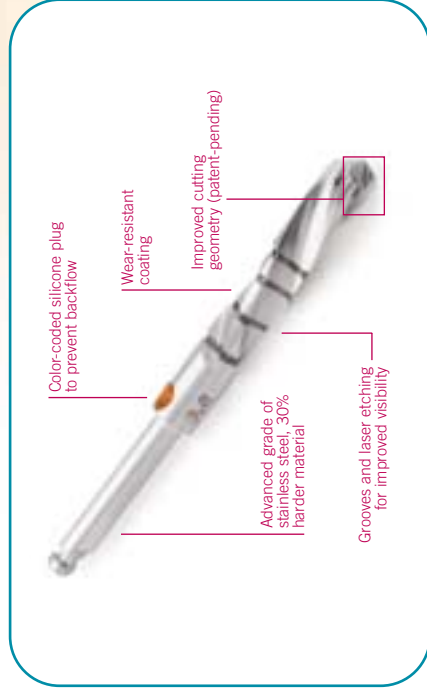
**TWO IMPLANTS. TWO SOLUTIONS.
ONE SYSTEM. ONE SOURCE.**

ONE SURGICAL SYSTEM. COMPLETE, VERSATILE, AND CONVENIENT.

One system places both Tapered Screw-Vent two-stage and AdVent single-stage implants, providing complete surgical versatility and maximum convenience. **Two implants. One surgical system. And one source: Zimmer Dental.**

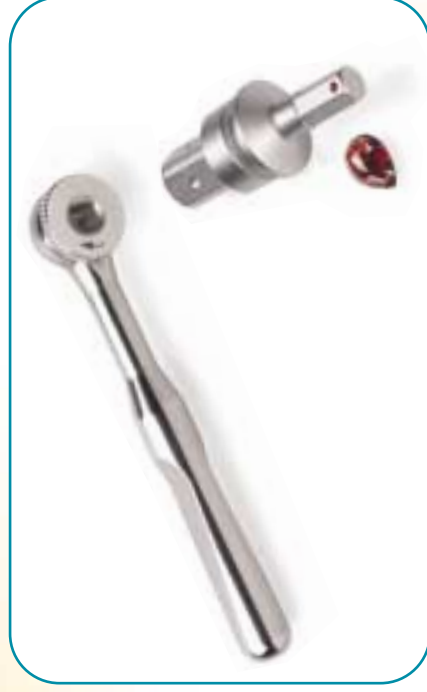
The surgical kit is organized in an easy to follow, step-by-step format with all components labeled for easy return to the tray after surgery. The surgical tray's size and low profile allow it to fit easily into the autoclave for sterilization. The additional compartment allows the clinician to place additional components and instruments in the kit when necessary.





Driva™ Reusable Surgical Drills provide unrivaled levels of strength and cutting efficiency. In addition to the benefits of internal irrigation, Driva drills offer:

- **Advanced cutting efficiency.** A sharper, stronger drill with an improved cutting geometry. (Patented)
- **Improved longevity.** Corrosion resistant coating protects drill sharpness and increase efficacy over time.
- **Enhanced visibility,** provided by grooved and laser-etched depth bands along with a matte finish.



GemLock™ Touchless Delivery System provides reliable transportation of the implant from packaging to the patient by offering:

- **Enhanced Reliability:** a secure fit and superior control when components are mated.
- **Improved consistency:** Utilizes spring-loaded synthetic ruby bearings to retain the implant to the delivery tool.
- **Internally engaging components:** for increased precision, making them ideal for use in tight interdental spaces.

Call to learn much more! For more information about how Zimmer Dental (formerly Centerpulse) can be your one source for Tapered Screw-Vent two-stage implants and AdVent single-stage, call 1 800 854 7019 • Outside the U.S. 1 760 929 4300 • For Germany: 49 07 61 45 84 723 • For France: 33 01 45 12 35 35 • For Spain: 34 93 846 05 43

For Australia: 61 2 4297 4182 or 1800 241 916 • For New Zealand: 61 2 4297 4182 or 1800 241 916 • For Canada: 1 800 265 0968 or 1 416 674 6116 • For Israel: 972 03 6124242.
Or consult our website at www.zimmerdental.com.

1. Data on file.

© 2004 Zimmer. All rights reserved. 4841 rev. 1/04. AdVent, Driva and Gemlock are trademarks of Zimmer Dental Inc. Tapered Screw-Vent and Hex-Lock are registered trademarks of Zimmer Dental Inc. Patented Technology from Zimmer. 1. Friction-Fit Abutments: Prosthetic Reliability, Pat. #5,334,024*. 2. Internal Hex or Octagon Connection: Prosthetic Simplicity, Pat. #4,960,381*. 3. Dual Transition Surface: Optimize Tissue Response, Pat. #5,885,079*. 4. Multiple Lead Threads: Three-Times Faster Insertion, Pat. #5,591,029*. 5. Tapered for Bone Expansion: Improves Initial Stability, Pat. #5,427,527*. 6. Selective Surface: Efficient Self-Tapping Insertion, Pat. #5,571,017*. 7. Twist Tri-Spade Drills: Split Point for Efficient Cutting, Pat. #5,575,650*. 8. Fixture Mount/Transfer Pkg.: Stage-one Impressions, Pat. #5,062,800*. 10. AdVent Implant Extender Pkg.: 1- or 2-stage Surgery, Pat. Pending.*



TWO IMPLANTS. TWO SOLUTIONS.
ONE SYSTEM. ONE SOURCE.

TAPERED SCREW-VENT.
COMPLETE SOLUTIONS FOR EVERY TWO-STAGE CASE.

Tapered Screw-Vent

TWO-STAGE IMPLANT



zimmer | dental
Confidence in your hands™

Formerly Centerpulse

TAPERED SCREW-VENT **TWO-STAGE** IMPLANT SYSTEM

With three diameters, four lengths and a tapered design, there's a Tapered Screw-Vent implant for any situation. And the complete prosthetic assortment offers an esthetic solution for even the most complex restorative case.



Fixture Mount/Transfer.

Minimizes chair time and financial investment. Functions as a fixture mount, impression post and preable temporary abutment.

Internal Hex Connection with Friction-Fit Abutments.

Forms a virtual "cold-weld" with the implant, virtually eliminating micromovement, the leading cause of screw-loosening.

Tapered Design.

Soft-bone surgical protocol enhances initial stability through osseocompression when the implant is inserted into a straight surgical site.

Triple-Lead Threads. Allows for three-times faster insertion than an implant with a standard thread pitch.

Self-Tapping. Means less surgical time.



Color-coded Fixture Mount/Transfer included with Tapered Screw-Vent implant is also preparable, temporary abutment.

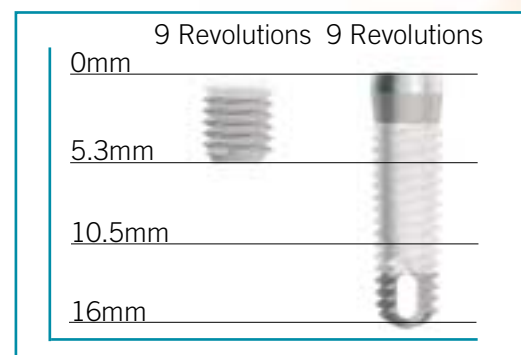
Tapered Screw-Vent is value-packaged with a fixture mount that functions as an impression post and temporary, preparable abutment. Tapered Screw-Vent

also comes with a low-profile cover screw that adds no additional height. The complete assortment of prosthetics support all restorative needs. And when a single-stage protocol is preferred, simply use the same surgical kit to place AdVent single-stage implants.

Bottom line: Clinicians prefer the complete two-stage solutions and versatility offered by Tapered Screw-Vent from Zimmer Dental.

Three Times Faster Insertion.

Triple Lead Threads allow for full seating of implants in one-third of the time.



Surgical placement for two-stage surgery with Tapered Screw-Vent implants.



1. Remove the implant assembly from the sterile, inner vial and carry it to the osteotomy.



2. Insert the self-tapping implant with the Fixture Mount Drill.



3. Block out the top of the Fixture Mount/Transfer to take an impression at the time of placement. (Optional)



4. Remove the Fixture Mount/Transfer with the 1.25mm diameter Hex Tool.



5. Attach the surgical cover screw with the 1.25mm diameter Hex Tool to seal the top of the implant.



6. Suture the soft tissue over the implant. (Bite registration & opposite arch impression are optional.)

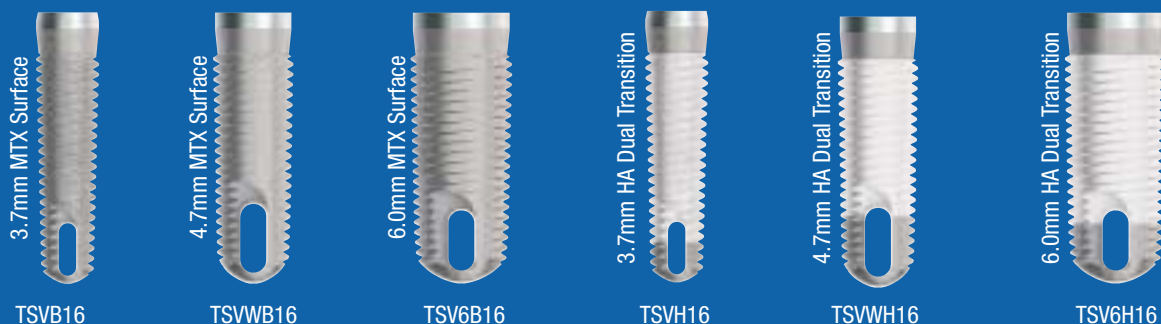
TAPERED SCREW-VENT **TWO-STAGE** IMPLANT SYSTEM



Surface Options:

MTX Microtextured Surface enhances bone apposition, compared to a machined titanium surface.¹ Zimmer Dental's proprietary grit-blast process produces a uniform 1-2 micron surface roughness without rounding precision corners and provides 44% more surface area than machined titanium (Rq 0.8 microns).¹

HA Dual Transition Selective Surface. Patented surface combination features a MP-1™ coated midsection, the highest crystalline HA available. With 1.5mm zone of textured titanium for soft tissue maintenance, and 3mm of textured titanium at the apex for self-tapping efficiency.



Implant Options:

Four implant lengths and three implant body diameters, 3.7mm, 4.7mm and 6.0mm, are available. From the narrow incisor to the wide-diameter molar, Tapered Screw-Vent comes in the ideal size.

Prosthetic Versatility for Optimal Esthetics

The Tapered Screw-Vent system offers three prosthetic platforms and a wide selection of restorative components for maximum versatility and optimal esthetics. Tapered Screw-Vent's friction-fit abutments form a virtual "cold-weld" when assembled with the implant's internal hex, virtually eliminating micromovement, the leading cause of screw-loosening.

Hex-Lock® Straight and 20° Angled Abutments for cement-retained applications, offering the restoring clinician the familiarity of traditional crown and bridge processes.

Hex-Lock Plastic Temporary Abutment and PureForm Ceramics for innovative esthetic solutions.

Hex-Engaging "Cast-To" Gold Abutments for either screw-retained single-tooth or cemented custom restorations.

Non-Engaging "Cast-To" Gold Abutments for screw-retained restorations in areas of limited vertical clearance.

Tapered Abutments for multiple-unit screw-retained restorations in areas where tissue and interocclusal heights are not issues.

Overdenture Attachments for bar-and tissue-supported appliances.

PLATFORMS



CEMENT-RETAINED RESTORATIONS



SCREW-RETAINED RESTORATIONS



OVERDENTURE ATTACHMENTS

